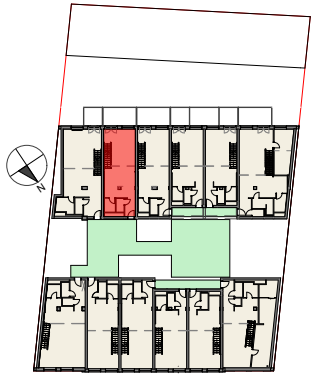


Vorentwurf Wohnbau Pitkagasse 4, 1210 Wien

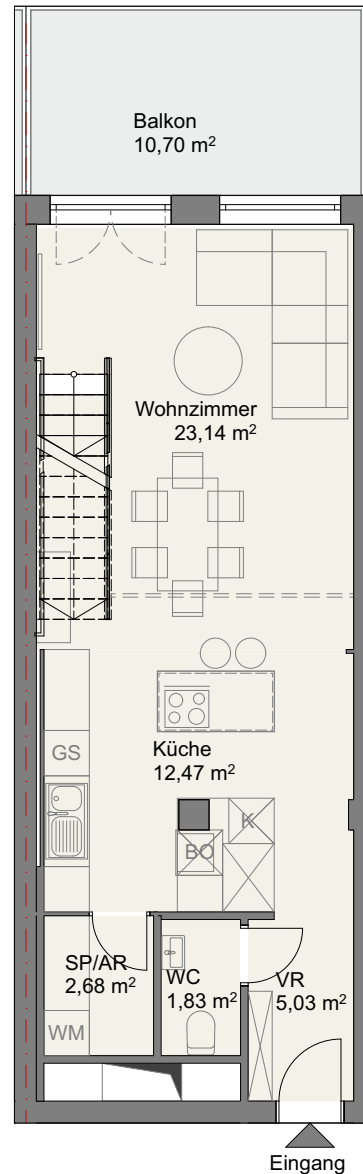


Lageplan
3. Obergeschoss

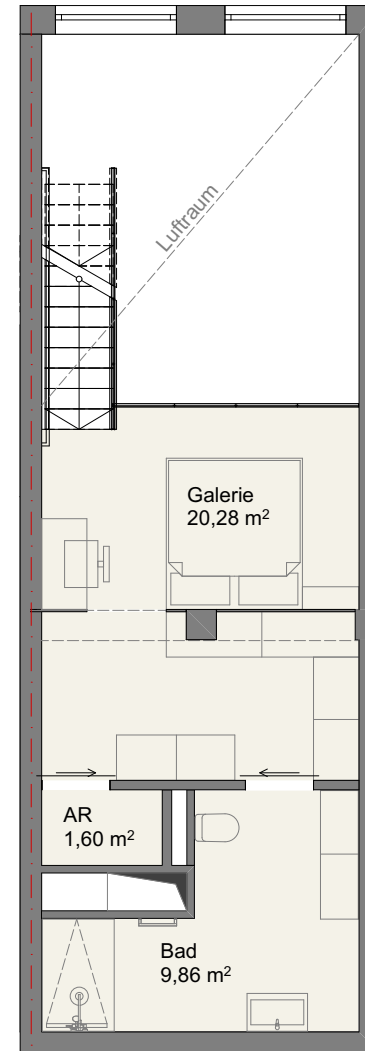
Top 25

Flächen

NGF: Wohnebene	ca. 45,10 m ²
NGF: Galerie	ca. 31,70 m ²
NGF Summe:	ca. 76,80 m²
Balkon:	ca. 10,70 m ²



3. Obergeschoss



4. Obergeschoss/Galerie